

Services: by the Numbers



Number of Volunteers:
228 | 73 more than last year



Families Served:
763 | 6.4% increase from last year



Individuals Served:
2,371 | 5% increase from last year



Total Visits:
10,591 | 9.4% increase from last year



Pounds of Food Distributed:
427,714 | 21.3% increase from last year

1,254
Pounds
of fresh Produce
grown

557 Children
Served at
Back 2 School
Bash

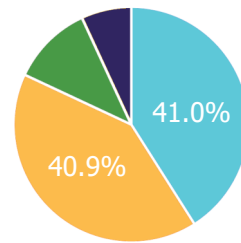
291 Winter
Coats
Distributed

958 Healthy
Eating
Activities

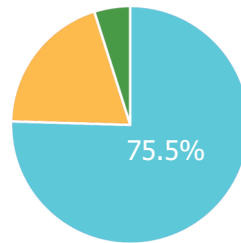


Annual Report 2019

Community Support



Sources of Donated Food



Volunteer Hours

Who We Serve

Did You Know: Over 66% of our families are employed.

Towns Represented

North Liberty—636 | Oxford—54 | Tiffin—33 | Solon—9
Lone Tree—6 | Hills—6 | Swisher—4 | Other—14



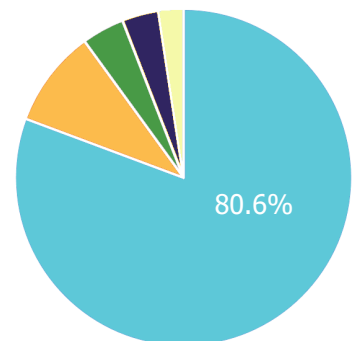
Ages

Adults—1,171 | Children—952
Seniors—121 | Unknown—24



2019 Expenses

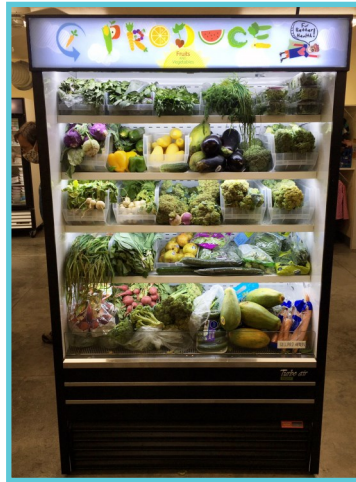
Food and Services: 80.6%
Management/General: 9.3%
Fundraising: 4.1%
Community Events: 3.5%
Garden: 2.4%



Major News of 2019

Keeping Cool

Thanks to a grant from TransAmerica and Johnson County Flex Funding, NLCP was able to purchase a new energy efficient produce cooler. Families submitted art for its sign.



Volun-Cheer

Emily joined NLCP's staff as the new Volunteer and Services Coordinator.

She has already proven to be a great addition to our team!



Lettuce Help!

Veggie Rx is a partnership between NLCP, Coralville Community Pantry, Johnson County Local Foods, University of Iowa Hospitals and Clinics, and local farms, made possible by grant funding from MidWestOne Bank.

This program 'prescribes' qualifying families with a free CSA share each week as well as regular check ups to treat chronic illnesses.




COVID-19 Impact


Giving More—

 **44.5** Pounds given on average per drive-thru visit.

Added Delivery Service—

 **250+** home deliveries since March.

Reaching Our Community—

 **Over 100** New families served since March.

How You Can Help

At this time, the best way to help is through a financial donation. A dollar goes a long way at the Pantry! Every one dollar donated purchases four pounds of food. northlibertycommunitypantry.org/donate

Over **70%** of NLCP's funding comes from neighbors like you.

